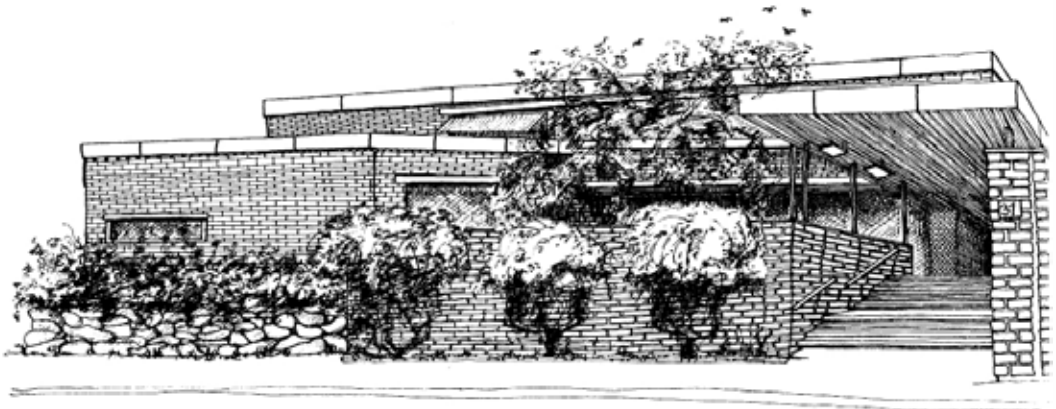




Annual Report 2008



Munthes gate 31, Oslo

INSTITUTE FOR SOCIAL RESEARCH

The Institute for Social Research (ISF) is an independent foundation whose primary objectives are:

- To promote the study and understanding of social structures and social change,
- to develop practical and theoretical methodologies in the study of social conditions,
- and to encourage the development of professional skills.

Ever since its foundation in 1950, the institute has been multidisciplinary in its orientation. Today the institute pursues research not only in all branches of the social sciences, but in history as well. ISF is currently one of the few social science environments outside the universities that does not limit itself to the study of a parti-

cular segment of society. For further information see www.socialresearch.no

The institute's history and current position in social research bear witness to its long-standing desire to avoid drawing a sharp distinction between basic and applied research. Both types of research are pursued in the same environment. We also work with the University of Oslo on research projects and post-graduate education.

In recent years much emphasis has been placed on establishing contact with ministries and unions, with a view to communicating research findings and identifying research needs. This type of contact is time-consuming, but it is encouraging to experience a growing understanding of what social research can contribute and what its limitations are.

Contact information

Institute for Social Research, Postbox 3233 Elisenberg, N-0208 Oslo, Norway
Visiting address: Munthes gate 31 Telephone: (+47) 23 08 61 00 Fax: (+47) 23 08 61 01
isf@socialresearch.no
www.socialresearch.no

Director's introduction

NEW FACES, NEW CHANGES, STRONG PERFORMANCE

ISF is in fine form! Projects are coming in at a healthy pace, we are pleased to be welcoming new, talented people on the staff, we are in the throes of a major revamp of offices, archives, accounts, organisation structure, leadership roles and collaboration methods.

One of the major changes in recent years affecting the Norwegian research institutes concerns our regulatory and economic environment. While research projects used to be allocated to individual or small groups of researchers working at the same institute, today, projects are more likely to be multi-institutional undertakings. While joint project proposals and funding applications to the Norwegian Research Council and EU stand out in particular, the trend affects projects funded by government ministries as well. Since research funding was restructured, it has forced us as individual researchers and institutes to adopt fresh approaches to our work.

Large-scale multi-institutional and multi-national projects are stimulating and edifying. At the same time, they present significant challenges not the least of which are the trade-offs required of institutes on scientific interests and perspectives. These developments also require stronger strategic leadership of research institutions. Funding and project applications have become more of an institution-wide task than the responsibility of the individual researcher. Decisions about which projects to submit to a programme need to be coordinated. This same applies to selecting scientific domain under which a project should be run, and which researchers to run it, both in-house and in partner institutes. Wide-ranging joint projects create more work for the institute's management in terms of coordinating efforts. Researchers work on several projects simultaneously, meaning that the number of projects is considerably higher. Joint project management gives the lead partner responsibility for administrative coordination, and that includes coordinating research done at other institutes. All in all, clients have transferred some of their responsibilities for coordinating and managing research projects to the centres which perform the research – often without additional funding to cover the extra costs.

Over the past year, ISF has won several important project bids involving researchers in our research groups and from other institutions. One example is the Centre for Research on Civil Society and Voluntary Sector. The Ministry of Culture and Church Affairs committed funding to the centre for a three-year period, with the possibility of an extension. Several other ministries have since provided additional funding. The centre is a partnership between ISF and the Rokkan Centre. It is run by ISF, which is also responsible for developing and running www.sivilsamfunn.no.

ISF has initiated a major overhaul of the management department to meet the demands of this new way of doing research. It includes improving information flow and archives, monitoring projects and accounting and budgeting procedures. Several important internal processes are under way at ISF, including work to draft a new general strategy. We are also reviewing the management and organisation structure.



Ann-Helén Bay
Institute Director

SCIENTIFIC STAFF AND BOARD

SCIENTIFIC STAFF

Staff input amounted to 50,5 person-years in 2008, with 34,5 from the scientific staff.

Research is divided into five areas

- Employment and working conditions
- Gender and society
- Civil society in transition
- Political institutions, voting and public opinion
- International migration, integration and ethnic relations

In all, 66 active research projects in these areas were ongoing in 2008.

Scientific staff by discipline

Sociology	12
Political science	9
Economics	8
Social anthropology	6
Communications	1
Criminology	1
Total	38

Researchers by competence

Research professor	9
Senior researcher	13
Research fellow	9
Research assistant	6
Total	37

THE BOARD

Appointed by the Norwegian Research Council:

Secretary General Anne Kari Lande Hasle
Consultant Laila Stange (deputy member)

Appointed by the University of Oslo:

Professor Aanund Hylland (vice-chairman)
Professor Helge Pharo (deputy member)
Professor Dag Album
Professor Signe Howell (deputy member)

Appointed by the board at the Institute for Social Research:

Professor Eivind Smith (chairman)
Senior advisor Marit Wårum (deputy member)
Advisor Terje Hauger
Political advisor Marianne Seip (deputy member)

Appointed by the staff at the Institute for Social Research:

Researcher Pål Schøne
Researcher Inés Hardoy
Researcher Karl Henrik Sivesind (deputy member)
Researcher Ragnhild Steen Jensen
Researcher Aagoth Storvik (deputy member)

ADMINISTRATIVE STAFF

Library

The library primarily serves the Institute for Social Research and Norwegian Social Research (NOVA). It has a collection of nearly 50 000 books, research reports, statistical publications, Norwegian parliamentary publications etc. Its bibliographical database is accessible via the Internet. The library also subscribes to approximately 290 Nordic and international journals and enjoys access to the most important bibliographical databases in the social sciences. Head librarian: Jon Haakon Hustad.

Information

The information department coordinates publication activities, liaises with the press and maintains the Institute's web pages. It organizes the practical side of lectures and seminars and performs editorial and secretarial services for selected journals and organizations. Head of information: Jørgen Moland.

IT department

The IT department handles all aspects of IT resources at ISF, NOVA and National Centre for Documentation on Disability. The most important duties are maintaining the operation of the local net, simple database and spreadsheet programme development, and individual support on office programmes and statistics. IT manager: Vegard Kleiven.

Project and administration department

The project and administration department keeps the Institute's accounts and handles project administration. It is also responsible for mail services, reception and address databases. Office manager: Grete Svensen.

Cafeteria

The Institute cafeteria serves the Institute for Social Research, NOVA and The National Centre for Documentation on Disability. Cafeteria manager: Wenche Skistad.



EMPLOYMENT AND WORKING CONDITIONS

Labour market integration and the mobilisation of groups that experience difficulties in the labour market are prominent topics in today's research and policy debates. How does the labour market function for low-skilled workers and what kind of policies ease labour market access and creates better jobs? With wage dispersion on the rise, in particular at the top of the wage distribution, what are the reasons behind this development, and what are the consequences? What is the relationship between unions and the welfare state, and how do they interact in the labour market and in the area of politics? Research on working life and labour markets is a long-standing commitment at the Institute for Social Research. The interaction between social policy, family policy and the labour market has gained increasing weight in our research efforts.

We attempt to understand more fully employee behaviour, business adaptation, public policy and the functioning of the labour market. Such knowledge is of general interest as a basis for understanding changes in society, But it is also important as a basis for political decision making, business and working life. Scientific knowledge is of vital importance to goal setting and implementation. Findings are published in national and international academic journals, in ISF's own reports, and papers presented at conferences.

The Employment and Working Conditions Research Group is involved in a number of joint projects with centres outside Norway. It is financed by the EU, NOS-S and the Nordic Council of Ministers. This co-operation will be maintained and expanded in the years to come.

2008 IN BRIEF

The Employment and Working Conditions Research Group has been awarded several

large projects by the Norwegian Research Council. These include studies of the costs and benefits of reallocation and reorganisation, ownership structure of firms, the effects of immigrants on the labour market, policies on integration of immigrants in the labour market, and determinants of sickness absence among workers. In addition, several research projects are financed by policy makers, including the Ministry of Labour and Integration and Ministry of Children and Equality.

One major theme has been the impact of immigration on the labour market. In several projects lead by Marianne Røed and Pål Schøne, the impact of immigration on the labour market of the native population and labour market integration of immigrants is analyzed. Another important theme has been the relationship between the design of unemployment benefits and outcomes such as the duration of unemployment and employment probabilities. In this field, Marianne Røed and Inés Hardoy have undertaken comparative studies across the Nordic countries in collaboration with other Nordic scholars. An important theme in the years to come will be sickness absence. ISF was awarded a substantial grant by the Research Council that shall look closer at the role of the workplace to explain sickness absence.

In 2008, the Institute for Social Research hosted an international workshop on the impact of immigration on the labour market. Several outstanding international researchers in the field participated.

PROJECTS 2008

- Friends or foes? Understanding the role of firms and workplaces for worker health
- Management wages and pay for other high wage workers

- Unemployment insurance and dynamics of employment and economic exclusion among low income earners
- Labour market outcomes of low-skilled adults, the impact of unemployment benefits
- Training and education offered by the Public Employment Service
- A viable welfare state. Equality and stability
- Changing work – the impact of reorganisation and reallocation on establishment performance and well-being
- The impact of immigration on employment and wages of Norwegian workers
- Labour market integration of non-western immigrants – identifying policies that work
- Does immigration grease the wheels of the labour market?
- The Norwegian bargaining model in an equal pay perspective
- Strategic Institute Programme on ownership: Challenges to the role of owner in a modern economy

STAFF

Research Director:

Erling Barth (on leave)

Pål Schøne (deputy research director)

Researchers:

Harald Dale-Olsen

Bjorn Dapi

Trygve Gulbrandsen

Inés Hardoy

Marte Kari Huse

Kjersti Misje Nilsen

Marianne Røed

Pål Schøne

Kristine von Simson

Aagoth Elise Storvik



GENDER AND SOCIETY

The study of gender as a social and cultural category and the impact of gender relations on other aspects of modern Norwegian society are important research areas at the Institute. Studies concentrate around three broad themes: working life, family, and politics. These thematic fields are closely interrelated, involving relations between the public and the private, and the state, market and civil society.

In particular, we want to explore different aspects of gender equality in the general context of democracy and human rights, and how gender intersects with class and ethnic differentiation in the context of a growing post-industrial and multicultural society. Through a combination of empirical studies and theoretical work our aim is to stimulate critical reflection and broad theoretical understanding of these issues, and to contribute to a body of research of both academic and practical value.

2008 IN BRIEF

In 2008, some of the projects of 2007 were carried forward, while new areas of commitment came into being with several substantial research projects. A major new area of study is work place integration, exclusion and job mobility for employees in different sectors of Norwegian working life. Another major commitment concerns the new gender quota regulations introduced by the Company Act according to which all boards of listed companies, including publicly owned companies, must comprise at least 40 % of each gender. A third new project examines the profound changes affecting Nordic equality politics, where a dominant (single strand) gender equality framework is being supplanted by what we might call “multidimensional equality”. This project connects with and continues our long-standing work analysing how the

politics of gender equality policies intersects with and is problematised in relation to other policy areas.

The research commitments of the Gender and Society group also involve an examination of how gender relations are embedded in property relations and traditions of ownership. The focus is on gender and ownership and how ideas about gender inform and are constituted by property relations in capitalist societies.

Working together with the IMER group, the Gender and Society group organizes the national network Feminism and Multiculturalism (the FEMM-network).

In April, the Gender and Society Research Group launched a new, large-scale project, “Gender Quotas in Boards of Large Joint Stock Companies - Democracy vs. Inclusion”. As of January 1 2004, all state owned companies are obliged to have at least 40 % women in their board of directors. From 2006 (new companies) and 2008 (existing companies), the “quota paragraph” of the Companies’ Act also applies to large, public joint stock companies, including the companies listed on Oslo Stock Exchange. The bill, adopted by the Parliament in 2003, was very controversial, dismissed by many as another Norwegian affirmative action invention. No other country has taken similar steps to determine who is eligible for top positions.

Our broad analysis of the reform will throw light on possibilities and constraints of political intervention in working life, affirmative action policies in a broader sense. It should also enhance our understanding of theoretical problems linked to property rights and state intervention in private spheres.

We study board recruitment procedures, the extent of overlapping directorships and gender relations in the board room. We also

ask if the quota arrangements in any way tend to influence the economic results of the companies. Four members of the group's research staff and two researchers from the Employment and Working Conditions Research Group will work on this project over the next three years.

PROJECTS 2008

- Integration, exclusion and job mobility in different types of Norwegian work
- Gender Quotas in the Boards of Large Joint Stock Companies. Democracy vs. Inclusion?
- Multidimensional equality - Legislative reforms and judicial practices
- Gender, ownership and local culture
- Intersections: Gender equality politics, family politics and integration politics
- Gender and Power in the Nordic countries
- Evaluation of Article 21 in the Gender Equality Act

- A Comparative Study of Gender Attitudes
- Feminism and multiculturalism – the FEMM-network

STAFF

Research Director:
Mari Teigen

Researchers:
Fredrik Engelstad
Vibeke Heidenreich
Ragnhild Steen Jensen
Trude Langvasbråten
Julia Orupabo
Kari Nyheim Solbrække
Jorun Solheim



CIVIL SOCIETY IN TRANSITION

Civil society research aims to increase our understanding of the civil field, in contrast to "state" and "market". We investigate changes in civil work, ownership and organization as aspects of a wider set of data on the boundaries of civil society.

The research takes place at the intersection of five axes:

Democracy and participation: Civilian associations – clubs and societies, foundations, cooperatives and self-reliance organisations – are created to achieve collective goals. They do not create profit for private owners, and they enjoy a certain level of autonomy in relation to external agents. The legitimacy of civil societies has traditionally been based on the fact that they enable political/democratic participation, strengthen social bonds, promote local engagement, and function independently of state and market. There are signs that all of this is under pressure.

Network society and voluntary organizations: New social theories underscore a fundamental transformation of modern developed societies from hierarchical coordination to network coordination. Network flexibility combined with new information and communication technologies transcend the limits of traditional social networks and explain the effectiveness and prevalence of the network as an organizational form in modern societies. These transformations affect mobilization of volunteering, the organization of voluntary activities and internal governance. Current research explores these transformations and their impact on the voluntary sector.

"Governance" – collaboration and steering: The term "governance" covers a wide range of new relations between civilian, public and market based actors. In a European context, these relations are attracting increasing attention. We look at partnerships and user contributions, financing and measures, and ownership.

Comparative studies of the voluntary sector: The Institute for Social Research coordinated

the Norwegian part of the Johns Hopkins study, which showed that people in Norway have a stronger sense of community commitment than in many other countries. Periodical surveys are realized in order to update our knowledge in this area, and compare Norway and other countries.

Property forms and civil society: Little scholarly attention has been paid to the foundation as a property form in Norway. Grant making foundations are expanding as interest in this type of property form has developed. The Institute for Social Research focuses on the comparative advantages of foundations as vehicles for public and private actors to achieve public interest objectives.

2008 IN BRIEF

This year saw the launch of a new research programme, the Centre for Research on Civil Society and Voluntary Sector, established in partnership between the Institute for Social Research and the Stein Rokkan Centre for Social Studies/The University of Bergen.

The Centre is funded by several ministries and has the following overarching objectives:

- lead and conduct a three to five year research programme on civil society and the voluntary sector;
- initiate and coordinate research and conveying research results;
- enhance knowledge of the voluntary sector's significance to society, facilitate government policy making for the sector and enhance the sector through research driven knowledge;
- help draft research proposals and strengthen research and knowledge networks by training research fellows and young researchers;
- conduct the programme's research projects and build research capacity and knowledge of civil society and the voluntary sector;
- provide a place for researchers and users to exchange knowledge, ideas and experiences.

The Centre has three key research areas: participation in voluntary organizations, civil society transformations, and public funding and policies toward the voluntary sector.

Another significant activity this year have been Karl Henrik Sivesind's and Bernard Enjolras' active role in the CINEFOGO network, Civil Society and New Forms of Governance in Europe. This "network of excellence" is supported by the EU's 6th Framework Programme. CINEFOGO seeks to promote citizen involvement and social participation in policy making. This requires knowledge of multiple identities, active citizenship and organized civil society. CINEFOGO is a consortium of more than forty universities and research institutes and a number of public service institutions in 15 European countries, as well as Harvard University in the USA, counting about 100 individual researchers. Sivesind is the coordinator for Norway.

PROJECTS 2008

- European Voluntary Associations network
- Governmental tools and voluntary sport
- Sport democracy: participation and discourse

- CINEFOGO - Network of Excellence
- Local associations in Norway survey
- Survey on volunteering
- Instruments of governance: incentives and effects on voluntary organizations
- Network societies and voluntary organizations
- Youth and volunteering
- Local organizational society
- Changes in the voluntary sector from 1998-2008: volunteerism, membership, structure, economic factors, social capital and motives for volunteering
- Perspectives on social inclusion in voluntary organizations

STAFF

Research Director:
Bernard Enjolras

Researchers:

Trygve Gulbrandsen
Luisa Klaveness
Håkon Lorentzen
Sunniva Lundin
Signe Bock Seggaard
Karl Henrik Sivesind

Kari Steen- Johnsen
Anne-Lene Bakken
Ulseth
Ragnhild Holmen
Waldahl
Guro Ødegård



POLITICAL INSTITUTIONS, VOTING AND PUBLIC OPINION

The study of political behaviour and democracy covers several areas: 1) the actors and institutions of representative democracy, and their interaction in a contemporary and historical perspective; 2) new forms of political participation, involvement and influence; 3) the “state of health” of democracy.

The changing relationship between voters and parties, with increasing volatility and unpredictability, requires constant monitoring and analysis.

Political participation has become a more complex phenomenon. Achieving a better understanding of what may be called the “the mechanisms of participation” is a major challenge for future research. This includes participation in both electoral and non-electoral arenas such as direct actions and citizen initiatives. An important question concerns whether participation in new arenas compensates for shrinking participation in conventional arenas, like elections.

If participation in political processes is going to strengthen confidence in political actors and the political system, it must be perceived as meaningful by the citizens involved. High trust and confidence cannot be taken for granted even in established democracies. Over time, increasing political distrust and withdrawal could undermine the democratic system. In Norway we see increasing uneasiness particularly at the local level. Turnout is down at local elections and political recruitment is increasingly difficult. This calls for a closer scrutiny of the relationships between the local, regional and national levels of government.

Immigration has introduced an ethnic component to the question of political participation and influence even in a homogeneous country like Norway. The political rights granted the Sámi minority also call for more research.

The mass media have become increasingly important as a link between citizens and political leaders. Consequently, interaction between

voters, leaders and the media has captured the interest of students of social and political processes. New technology has opened up new channels of communication and information exchange. Studies of political communication in the mass media are vital in order to understand major trends in post-modern societies.

2008 IN BRIEF

The most important event in 2008 was perhaps the establishment of a new programme for Sámi election studies. The Sámi parliament was established in 1989 as a representative body of the Sámi population. Elections are held every four years at the same time as the national Storting elections. However, there have been no systematic studies of election campaigns or voter behaviour in connection with these elections before. The new programme is intended to remedy this deficiency by analyzing nomination processes, campaign efforts and strategies, as well as voter attitudes. The programme is a collaborative effort of the Institute for Social Research, Sámi University College, Kautokeino, and Northern Research Institute, Alta.

Another major event was the completion of Johannes Bergh's doctoral dissertation on “Gender Attitudes, New Politics and Modernization”, which he defended in February 2008.

Elin H. Allern and Jo Saglie published the article “Between Electioneering and `Politics as Usual´: The Involvement of Interest Groups in Norwegian Electoral Politics», in D. Farrell and R. Schmitt-Beck (eds): *Non-Party Actors in Electoral Politics: The Role of Interest Groups and Independent Citizens in Contemporary Election Campaigns*, Baden-Baden: Nomos. Allern and Saglie also gave presentations at a conference marking the opening of the University of Copenhagen's new Centre for Voting and Parties (CVAP).

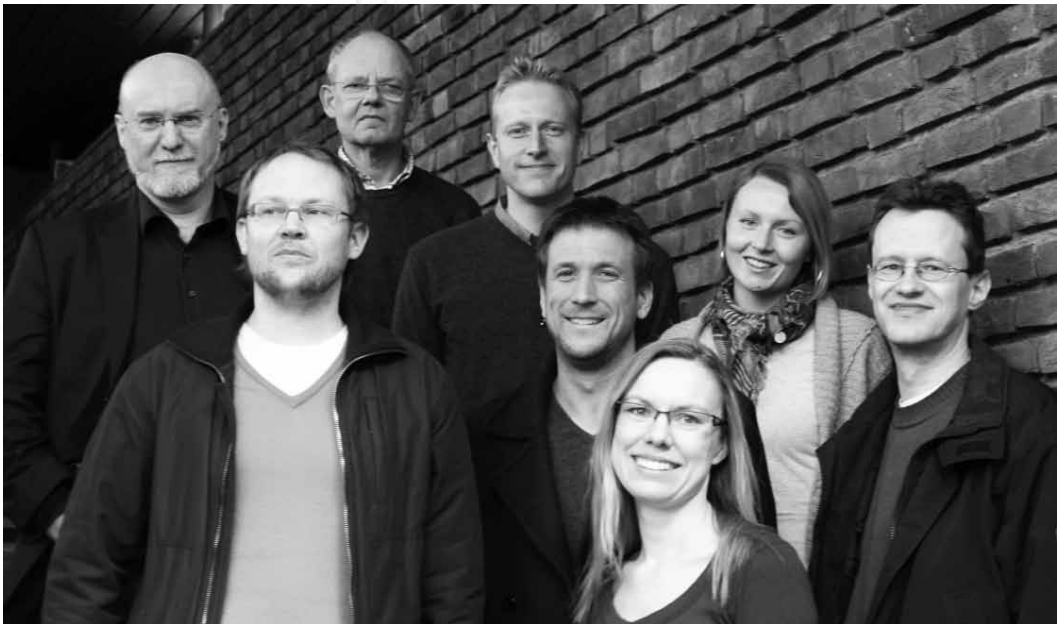
PROJECTS

- The Norwegian Election Studies
- Delegation and responsibility in a multiparty system
- Power, democracy and ICT
- The politics of welfare policy
- National elites under pressure: Stability and change in elite structures and elite behaviour in a globalized world
- New urban regions – changing participation? Citizens, parties and civil society
- Democratic governance in a multi-level system: How Norwegian local government deals with national policies
- The 2007 Local Democracy Study
- Political Integration of Immigrants: A study of Participation and Representation in Norwegian Local Politics
- Cultural capital and gender. Elites in Norway and France
- The history of shipping in Norway

STAFF

Research Director:
Bernt Aardal

Researchers:
Elin Haugsgjerd Allern
Johannes Bergh
Tor Bjørklund
Rune Karlsen
Even Lange
Hanne Marthe Narud
Stine Renate Otterbekk
Jo Saglie
Francis Sejersted



Research area

INTERNATIONAL MIGRATION, INTEGRATION, AND ETHNIC RELATIONS

The research group works at the intersection between the national and the international arena. Research on national challenges to globalization and migration flows – be it the impact of human rights, access control or integration policies – needs theoretically a comparative perspective alongside studies of more specific national factors.

An overarching perspective for the research group is how society should be organized in order to realize ideals of equality and equal treatment, when the interplay between ethnicity, religion, class and gender is taken into consideration. Through theoretical work and empirical studies based on qualitative methods as well as quantitative measures, the research contributes to a basic understanding of and encourages critical reflection around five main themes: migration management, welfare state and welfare policy, labour market, human rights and political participation.

2008 IN BRIEF

In 2008, several studies were completed under three main research headings. One strand concerned research on access control and how international conventions and EU directives constrain foreign policy. In 2008, the number of asylum seekers arriving Norway more than doubled. In a new study we asked what causes these fluctuations, how do conditions in the applicants' home countries, in the countries of transit, in the receiving region and in the host country influence the choice of destination. Three research projects addressed the implication of immigration policy for children. One explored observance of children's participatory rights by the Norwegian immigration authorities, one discussed the status of asylum-seeking children in light of statutory requirements that education, health and child care institutions treat all children equally, and one investigated how informal networks of care constitute a so-

cial and cultural potential for children and adult caretakers involved in informal and legal migration. An international workshop on children, migration and citizenship was held at ISF.

The European Migration Forum arranged a seminar entitled "Towards a Common European Asylum System - Consequences for Norway" at which the government, NGOs and research community participated.

Another strand of research concerns government policy making on equality-diversity-pluralism issues. Areas of policy making include family policy, gendered and generational relations. One project explored the prevalence assessment of female genital cutting (FGC) in Norway, the expertise, commitment and procedures put in place by the welfare authorities to tackle the problem. Public policies on domestic violence and the situation for young women from ethnic minorities who leave their families to escape oppression and violence were respectively investigated in two projects. In 2008 a three-year evaluation of the Government's Action Plan against Forced Marriage got under way. The research strand includes a project on dialogue work in schools to help migrant minors with value conflicts and life choices.

A third field of research focused on dilemmas emerging at the interface between religious freedom, democracy and women's human rights, the emphasis being on religious family (personal) law. The hijab controversy provided, firstly, a point of departure for the exploration of legal dilemmas embedded in the human rights conventions, and secondly an opportunity to question the diverse understandings of secularism in a context of the "re-emergence of religion". Aiming at a clearer view of the limits to religious freedom and state intervention, the studies drew on contemporary public debates and recent theoretical developments. Both projects were conducted under a multidisciplinary framework, by scholars of law and theology. They were initiated by the University of Oslo as

part of the multi-faculty research programmes DEMROK (Democracy, Religious Freedom and Women's Human Rights) and CULCOM (Cultural Complexity in the New Norway) respectively.

PROJECTS 2008

- The Nordic Welfare State and its Others - Immigration, Citizenship and Governance in Norway, Sweden and Denmark 1945-2005
- Transnational networks, national democracies. Political mobilization and engagement among young adults with a minority background
- Democracy, religious freedom and women's human rights
- Secularism: obstacle versus precondition for integration
- Why Norway? Asylum seekers' choice of Norway
- Evaluation of the Norwegian Refugee Council's information project: Information and Counselling on Repatriation and Return (INCOR)
- Child asylum-seeker and children's rights
- The participatory rights of children under Norwegian immigration laws
- Informal transnational child migration to

Norway: Dilemmas in international and national regulations on family life and citizenship

- Public policies on domestic violence in Norway, Denmark and Sweden: What about violence in ethnic minority families?
- Rebel girls. The situation for young ethnic minority women who leave their families because of oppression and violence
- Evaluation of the Government's Action Plan against Forced Marriage
- Dialogue Work in Schools on Value Conflicts and Life Choices – parental perceptions
- Female genital cutting in Norway – prevalence assessment and strategy recommendations
- Situation testing as a method of investigating ethnic discrimination

STAFF

Research Director:
Hilde Lidén

Researchers:
Tonje Bentzen (until June 2008)
Tordis Borchgrevink
Anja Bredal

Jan Paul Brekke
Grete Brochmann
Anniken Hagelund
Arnfinn Haagenen
Midtbøen
Jon Rogstad
Hilde Rusten
Idunn Seland
Miriam Latif Sandbæk
Monica Five Aarset





Centre for Research on Civil Society & Voluntary Sector

www.sivilsamfunn.no

www.civilsociety.no

The Centre for research on Civil Society and Voluntary Sector is a research programme commissioned by the Ministry of Culture and Church Affairs. It started up in July 2008 and is a collaborative project between ISF in Oslo and the Rokkan Centre for Social Studies at The University of Bergen.

- The Centre is autonomous and independent. Primary objectives include:
- leading and executing a 3-5-year research programme;
- contributing to existing knowledge about the voluntary sector and its significance to society, aiding development of government policy for the sector and enhancing the sector through research driven knowledge;
- developing new research propositions and strengthening research and knowledge networks;
- strengthening and improving research of civil society and the voluntary sector;
- providing a place where researchers and users can exchange knowledge, ideas and experiences.

2008 IN BRIEF

Voluntary work is integral to the civic sector. Considering the historical importance of voluntary and civic engagement in Norway, the field has been surprisingly little researched. In order to identify the voluntary sector's role and importance for the Norwegian society, three key research areas have been singled out: participation, transitional processes and financing and other framework conditions.

The Centre opened only recently, but has already published its first report, *Frivillighet, innvandring og integrasjon* (Volunteerism, immigration and integration), a state of the art report on Norwegian immigration and ethnic minority voluntary sector participation research.

In addition, several other research projects have been initiated at the Centre. Two surveys commenced in late 2008, one of local level associations and one on volunteering. The first builds on the Norwegian contribution to a 1997/98 Johns Hopkins University study, a systematic effort to analyse the civic (non-profit) sector. Comparing the Norwegian civil society with those of other countries is essential for identifying its special features and for better understanding the transitional processes characteristic for the civic field on a macro level.

As part of the 1998 Johns Hopkins study a postal survey was conducted of a representative sample of the Norwegian population aged 16-85 on topics such as volunteering, membership numbers, economic contributions, attitudes, values and motivations for volunteering. The results received great attention. In order to update figures and for comparative reasons, a similar survey on volunteering was initiated at the Centre in late 2008. Both surveys will provide important material for future research projects at the Centre

Website

As it is a project spanning two cities, the Centre itself has no physical location. Thus, its website, civilsociety.no, plays a pivotal role facilitating communication between researchers affiliated with the Centre and, not least, with its intended users. Due to the Centre's virtual nature, the website was developed with the intent of being more than a static, one-way communicative platform. The Centre's chat room is a place



Left to right: Centre Director Bernard Enjolras, Centre researcher Per Selle and webmaster Luisa Klaveness

where researchers and users come to share information, ideas and experiences. Furthermore, the site contains links to extensive resources. Not only can users access and download reports, articles and books published by researchers at ISF and the Rokkan Centre, but the site also contains a bibliography of literature relevant to civil society and voluntary sector studies. Users will also benefit from the numerous links to useful websites.

Events

Several events were organised in connection with the Centre's opening in 2008 and early 2009. The official kick-off was performed by the Norwegian Minister for Culture and Church Affairs in October 2008 in front of an audience of over 50 representing research institutions, ministries and voluntary organisations. In early 2009 the Centre's website was launched.

Among the speakers were State Secretary, Wegard Harsvik, Centre leader Bernard Enjolras and Trond Enger, Secretary General of the Norwegian Children and Youth Council.

A conference will be held in August 2009 to present the latest contributions to research on the voluntary field and to highlight key research questions for future study. The conference aims at enhancing dialogue between the Centre's users and researchers.

PROJECTS 2008-2009

- Local level associations in Norway
- Survey on volunteering
- Volunteerism and integration
- Immigrants in the voluntary sector
- Youth and volunteering
- The integration project at Møhlenpris
- Nordic Volunteerism
- The network society and voluntary organisations
- Tools of governance - incentives and effects on the voluntary sector
- Youth and volunteering
- The local organisation community

STAFF

Research Director:
Bernard Enjolras

Researchers:
Kristin Strømnes
Johannes Bergh
Dag Arne Christensen
Trygve Gulbrandsen
Anniken Hagelund
Tone Hellesund
Luisa Klaveness
Tord Lindén
Timo Lochocki
Jill Loga

Sunniva Lundin
Håkon Lorentzen
Jo Saglie
Per Selle
Karl Henrik Sivesind
Kari Steen-Johnsen
Ragnhild H. Waldahl
Dag Wollebæk
Guro Ødegård
Jacob Aars

INTERNATIONAL COOPERATION 2008

The Institute for Social Research promotes international cooperation through projects, publishing, visits and assignments in international organisations. Cooperation with excellent institutions at home and abroad contributes to increased quality and higher competence. About one third of the Institute's projects have foreign partners.

PROJECT PARTNERS

In 2008 the researchers at ISF had project partners at the following international institutions:

- Aalborg University, Denmark
- Australian National University
- Estonian Institute of Humanities
- Göteborg University, Sweden
- Institute of Social Work and Social Education, Frankfurt, Germany
- Institutet för framtidsstudier, Sweden
- Johns Hopkins University, Baltimore, USA
- Justus-Liebig University Gießen, Germany
- McGill University, Montreal, Canada
- Policy Studies Institute, London
- Queen Mary, University of London
- Radboud University Nijmegen, Netherlands
- Roskilde University
- Social Science Research Center, Berlin, Germany
- Stockholm School of Economics
- Stockholm University
- Tilburgh University, Netherlands
- Universiteit van Amsterdam, Netherlands
- University of Bristol, UK
- University of California, Berkeley, USA
- University of Cologne, Germany
- University of Copenhagen, Denmark
- University of Helsinki, Finland
- University of Ljubljana
- University of London
- University of Mannheim, Germany
- University of Oviedo, Spain

- University of Southern Denmark
- University of Strathclyde, Scotland
- University of Toronto, Canada
- University of Trento, Italy
- University of Twente, Holland
- Uppsala University, Sweden
- University of Aarhus, Denmark
- Westfälischen Wilhelms-Universität Münster, Germany

ASSIGNMENTS IN INTERNATIONAL SCIENTIFIC ORGANISATIONS

The researchers had assignments in the following international scientific organisations:

- Chaire d'Economie Sociale, Université de Québec à Montréal
- Centre d'Economie de la Sorbonne. Equipe Modélisation appliquée trajectoires institutionnelles stratégies socioéconomiques (MATISSE) Université Paris I, Pantheon-Sorbonne
- CINEFOGO – Civil Society and New Forms of Governance in Europe
- Det danske strategiske forskningsråd
- The Comparative Study of Elections and Representative Democracy (CSES)
- Cost Action 23: The Evaluation of European Labour Market Programmes
- EMES European Research Network
- European Association of Labour Economists (EALE)
- European Consortium for Sociological Research (ECSR)
- European Social Survey
- European Voluntary Associations in the Modern and the Contemporary Period (EVA)
- International Committee for Research into Election and Representative Democracy (ICORE)
- International Political Science Association
- International Scientific Commission of CIRIEC

- on Social and Cooperative Economy
- International Scientific Commission of CIRIEC on Social and Cooperative Economy
- International Society for Nonprofit Research
- Labor and Worklife Program, Harvard Law School
- REMESO, Linkøping university
- Modélisation appliquée trajectoires institutionnelles stratégies socioéconomiques (MATISSE) Université Paris I, Pantheon-Sorbonne
- Nordic Migration Research
- The institute for the Study of labour, IZA, Bonn

ISF ABROAD

ISF researchers were invited to present research and/or deliver lectures by the following institutions:

Guest lectures:

- Aalborg University, Denmark
- Boisi center, Boston College, USA
- Harvard University, USA
- Hertie Foundation, Frankfurt, Germany
- University of Copenhagen, Denmark

Guest visits:

- Boisi Center, Boston College, Boston, USA
- Harvard Law School
- University of California, Berkeley, USA

ISF ONLINE

www.samfunnsforskning.no | www.socialresearch.no

On the institute's web pages you can:

- Download reports, articles and journals in full text PDF
- Order all types of publications
- Read presentations of the institute's researchers and research projects
- Find links to Norwegian and international web resources in the social sciences
- Read and subscribe to news from ISF

COMMUNICATING RESEARCH

The Institute's research results are disseminated through a number of channels such as reports, books, journals, anthologies or communicated verbally at specialist conferences. While research is generally conveyed to clients in the form of reports or papers, verbal presentations, seminars and the media are used as well. Students and research fellows are kept up to date by teachers and advisors. A comprehensive list of reports, articles, books and conference papers published by the Institute can be found on page 23-28.

Reports

The Institute publishes the results of its projects in *Rapporter – Reports* – one of the Institute's own series. Most of our reports can be downloaded at www.samfunnsforskning.no. Paper copies, and all of our books, can be ordered via the same site. Eleven reports were published in 2008, the same number as in 2007.

www.samfunnsforskning.no

The website is the most important means of reaching a wider audience and maintaining and updating the Institute's web pages is taken very seriously. Researchers post new publications, projects, events, write items of topical interest, abstracts of publications and present projects.

The design and content of our web site did not change in 2008, during which visit count recorded about 1250 visits per day. This is the general average throughout the year, though there are spikes at the start of the academic terms. All in all, samfunnsforskning.no had 450,000 separate visits in 2007, up from 300,000 in 2006, 260,000 in 2005 and 180,000 in 2003. The number of visits is high, suggesting that the typical visitor continues to explore many of the pages on the site. Statistics for 2008 are uncertain and next year the website will switch to a new web content management system with an improved statistics solution.

Subscriptions for our electronic news service

rose to 1170, up from 1035 in 2007 and 831 in 2006. The figures refer to the number of entries, not individual subscribers. Subscribers who do not want the whole news package (734 persons) may be registered on several subgroups.

In the autumn of 2007, ISF started the process of switching web content management systems, and in the course of 2008 our existing content (more than 22.000 pages) was moved to the new solution, although the design and content of the website remained the same. When the process is completed in spring/summer 2009, no major changes will be notable to the public, as the structure and design will stay more or less unchanged. Improvements will be made to our web shop, registrations and agenda pages.

In 2008, our information department created a new website www.sivilsamfunn.no which is the website of the recently established Centre for Research on Civil Society and Voluntary Sector, a collaboration project between ISF and the Rokkan Centre in Bergen

Meetings, seminars and conferences

Researchers at the Institute meet clients and user groups on a regular basis, often informally in connection with handing over project reports, and at seminars attended by users.

The Institute hosted several events for clients in 2008, including seminars and the Late Summer Get-together. Afternoon debates and book presentations are open to the public, clients, academics and journalists.

ISF Abstracts

Abstracts of books and reports are published two or three times a year in ISF *Sammendrag* (ISF Abstracts), as well as summaries of articles printed in Norwegian and international journals and anthologies. Subscription is free and can be registered on our web pages or by contacting the Institute.

PUBLISHING AND EDITORIAL WORK

The staff at ISF publish results of research projects in institute reports, books, articles in journals and anthologies and as papers presentations at scientific conferences. Results can also be published at lectures, seminars and in the press. In addition, the researchers communicate their research through lectures and teaching of students and research fellows.

In addition to the ISF Report series, the Institute is responsible for the following four scientific journals:

COMPARATIVE SOCIAL RESEARCH



The yearbook *Comparative Social Research* aims at furthering the international orientation in the social sciences. Each volume is concentrated on a specific topic, mostly of substantive, but also of methodological character. As a rule, the articles presents two or more cases for comparison,

be they nations, regions, organizations, or social units at different points of time. The themes of the most recent volumes have been the multicultural challenge, comparative studies of culture and power, and conscription in the armed forces. *Comparative Social Research* is published by Elsevier Science.

NORDIC JOURNAL OF POLITICAL ECONOMY



Nordic Journal of Political Economy (NOPEC) is published twice a year. The editors welcome submissions from all areas of economics and social science. Submissions are subject to a standard referee process. The journal publishes articles that are relevant to political and normative issues, survey papers for a general audience of economists and social scientists, inter-disciplinary papers as well as empirical research from the Nordic countries.

The editors of the journal organise annual conferences. From 2007 NOPEC is only published online.

FOCUS ON THE WORKING LIFE



Søkelys på arbeidslivet (Focus on the Working Life) is published by the institute with financial support from the Ministry of Labour and Social Inclusion and the Norwegian Research Council. The periodical is intended as a supplement to existing publications on the labour market and labour research, and it aims at making research findings available to a wider circle of readers.

JOURNAL OF SOCIAL RESEARCH



In 1960, the Institute established the *Tidsskrift for samfunnsforskning (Journal of Social Research)*. The journal is published by Universitetsforlaget (Norwegian University Press). Aside from original articles by Norwegian researchers often based on empirical studies, the journal contains book reviews, debates on current issues, review articles and articles on research policy. Issues on special themes are also published.

EDITORIAL WORK 2008

In 2008, the scientific staff at ISF were editors, guest editors, members of editorial boards and referees in a wide range of Nordic and international journals.

Editor, guest editor, member of the editorial board

International journals:

- Acta Sociologica
- British Journal of Industrial Relations
- Comparative Social Research
- International review of social economy (RECMA)
- Nordic Journal of Political Economy
- Revista de Economia Publica
- Revue d'analyse comparée en administration publique
- The Annals of Public and Cooperative Economics

Norwegian journals:

- Norsk Tidsskrift for migrasjonsforskning
- Nytt Norsk Tidsskrift
- Sosiologi i dag
- Sosiolognytt
- Stat og styring
- Søkelys på arbeidslivet
- Tidsskrift for kjønnsforskning
- Tidsskrift for samfunnsforskning
- Tidsskrift for Velferdsforskning

Referees

International journals:

- Acta Sociologica
- Annals of public and cooperative Economics
- British Journal of Industrial Relations
- British Journal of Sociology

- Childhood
- European Sociological Review.
- Information Polity
- International Journal of Manpower.
- International Journal of Social Welfare
- International Sociology.
- Journal of Civil Society.
- Journal of Manpower.
- Journal of Power
- Nonprofit and Voluntary Sector Quarterly
- Nordic Journal of Religion and Society
- Norsk Statsvitenskapelig Tidsskrift.
- Party Politics
- Poetics
- Scandinavian Journal of Sociology
- Sociologica
- The Open Social Science Journal.
- VOLUNTAS
- Young

Nordic journals:

- Sosiologi i dag.
- Sosiologsk tidsskrift.
- Søkelyset på arbeidslivet
- Tidsskrift for innvandringsforskning.
- Tidsskrift for samfunnsforskning.
- Tidsskrift for Velferdsforskning

Publication activities at ISF in 2008

Articles in scientific referee journals	20
Scientific monographs	3
Scientific books, textbooks or other autonomous publications	2
Articles in scientific books	15
Chapters or articles in textbooks, proceedings, scientific journals	9
Reports in own report series	11
Reports in external report series	11
Lectures/presentations of papers/posters	46
Articles and lectures in popular science	87
Editorials, feature articles, etc. published in periodicals and newspapers	21

PUBLICATIONS 2008

BOOKS

Brochmann, Grete & Knut Kjeldstadli: *A History of Immigration. The Case of Norway 900-2000*. Oslo: Universitetsforlaget.

Enjolras, Bernard (red.): *Gouvernance et intérêt général dans les services sociaux et de santé (Governance og allmenn interesse i helse- og sosialtjenester)*. Bruxelles, Bern, Berlin, Frankfurt am Main, New York, Oxford, Wien: Le Centre International de Recherches et d'Information sur l'Économie Publique, Sociale et Coopérative (CIRIEC).

Hauglin, Otto, Håkon Lorentzen & Sverre Dag Mogstad: *Kunnskap, opplevelse og tilhørighet. Evaluering av forsøksfasen i Den norske kirkes trosopplæringsreform*. Bergen: Fagbokforlaget.

Slagstad, Rune: (*Sporten*). *En idéhistorisk studie*. Oslo: Pax.

Ulseth, Anne-Lene Bakken: *Mellom tradisjon og nydannelse. Analyser av fysisk aktivitet blant voksne i Norge*. Oslo: Akademisk Publiserings.

ARTICLES

Allern, Elin Haugsgjerd & Jo Saglie: «Between Electioneering and 'Politics as Usual': The Involvement of Interests Groups in Norwegian Electoral Politics». In: David Farrell and Rüdiger Schmitt-Beck (red.) *Non-Party Actors in Electoral Politics: The Role of Interest Groups and Independent Citizens in Contemporary Election Campaigns*. Baden-Baden: Nomos.

Allern, Elin Haugsgjerd: «Partidemokrati på prøve». *Samtiden* (2/2008):80-91.

Andersen Goul, Jørgen og Tor Bjørklund: «Scandinavia and the Far Right». In: Peter Davies with Paul Jackson (red.) *The Far Right in Europe. An Encyclopedia*. Oxford: Greenwood World Publishing:147-163.

Barth, Erling & Kalle Moene: «Likhet og åpenhet». *Tidsskrift for velferdsforskning*, 11 (1):5-16.

Barth, Erling, Bernt Bratsberg, Torbjørn Hægeland & Oddbjørn Raaum: «Who pays for performance?» *International Journal of Manpower*, 29 (1):8-29.

Bay, Ann-Helén: «Står eldrepolitikken på trygg grunn?» In: Svein Olav Daatland (red.) *Halve livet. Artikler om aldring og livsløp*. Bergen: Fagbokforlaget:270-275. (T 2008:036)

Bergh, Johannes: «Årsaker til kjønnsforskjeller i stemmegivning. – En kunnskapsstatus». *Tidsskrift for samfunnsforskning* 49 (3):421-434. (T 2008:030)

Bergh, Johannes, Tor Bjørklund & Vebjørn Aalandslid: «Stemmer til venstre, men er ikke venstreorientert. Ikke-vestlige innvandrere og kommunevalget 2007». *Samfunnsspeilet*, 22(2): 2-11.

Borchgrevink, Tordis & Grete Brochmann: «Mangfold uten grenser». *Samtiden* (3-2008).

Bredal, Anja: «Fra 'spesielt' til 'ordinært'? Noen utfordringer i det offentlige hjelpeapparatets håndtering av tvangsekteskap». In: *IMDi-rapport 6-2008 Integreringskart 2008, Tvangsekteskap – en kunnskapsstatus:44-50*.

Bredal, Anja: «Politiques et stratégies norvégiennes contre les mariages forcés». *Migrations Societé*, 20 (119 (septembre-octobre 2008)).

Brochmann, Grete: «Elsker vi Amerika likevel?» *Samtiden* (4/2008):36-45.

Brochmann, Grete: «Mangfold, identitet og utenrikspolitiske utfordringer». In: *Globale Norge – hva nå?* Oslo: Utenriksdepartementet.

Brochmann, Grete & Jon Erik Dølvik: «A Imigracao: Inimiga do Estado-Providencia?» In: D. Papademetriou (ed.) (red.), *A Europa e os seus Imigrantes no Século XXI*. Lisboa: Fundacao Luso-Americana.

Brochmann, Grete: «Immigration, the Welfare State and Working Life? the Case of Norway». *European Review*, 16 (4):529-536.

Engelstad, Fredrik: «Social conventions and the dialectics of recognition: Power and culture in Shakespeare and Ibsen». *Journal of Power*, 1:143-155.

Enjolras, Bernard: «Two hypotheses about the emergence of a post-national European model of citizenship». *Citizenship Studies*, 12 (5):495-505.

Enjolras, Bernard: «Introduction». In: Enjolras, Bernard (red.), *Gouvernance et intérêt général dans les services sociaux et de santé. Le Centre International de Recherches et d'Information sur l'Économie Publique, Sociale et Coopérative (CIRIEC)*.

Enjolras, Bernard: «Régimes de gouvernance et intérêt général». In: Enjolras, Bernard (red.), *Gouvernance et intérêt général dans les services sociaux et de santé. Le Centre International de Recherches et d'Information sur l'Économie Publique, Sociale et Coopérative (CIRIEC)*.

Ferrari de Carli, Eli: «Muslimske kvinner, haltende ekteskap og skilsmisse - prosessen rundt politiske initiativ til lovendringer». *Norsk tidsskrift for migrasjonsforskning*, 9 (1):5-26.

Ferrari de Carli, Eli: «Shari'a-råd til diskusjon». *Tidsskrift for kjønnsforskning*. 32(2)58, 2008.

Gulbrandsen, Trygve: «Elite og livsløpet». In: Svein Olav Daatland (red.), *Halve livet. Artikler om aldring og livsløp*. Bergen: Fagbokforlaget.

Hagelund, Anniken: «For women and children! The family and immigration politics in Scandinavia». In: Ralph Grillo (red.), *The Family in Question. Immigrant and Ethnic Minorities in Multicultural Europe*. IMISCOE Research Series. Amsterdam: Amsterdam University Press.

Hardoy, Inés & Pål Schøne: «Avkastning av utdanning for ikke-vestlige innvandrere: Hvorfor er den så lav?» *Søkelys på arbeidslivet*, 25(3):401-416.

Hardoy, Inés & Pål Schøne: «Hvor mye betyr barn for lønnsforskjeller mellom kvinner og menn?» *Tidsskrift for samfunnsforskning* 49(1):3-36.

Hardoy, Inés & Pål Schøne: «Subsidizing 'Stayers'? Effects of a Norwegian Child Care Reform on Marital Stability» *Journal of Marriage and Family*, 70(3):571-584.

Hardoy, Inés & Pål Schøne: «The family gap and family friendly policies: the case of Norway». *Applied Economics*, 40:2857-2871.

Hauglin, Otto, Håkon Lorentzen & Sverre Dag Mogstad: "En ny fase i dåpsopplærings historie". In: *Kunnskap, opplevelse, tilhørighet. Evaluering av forsøksfasen i Den norske kirkes trosopplæringsreform*. Bergen: Fagbokforlaget

Hauglin, Otto & Håkon Lorentzen: "Lokale tiltak, oppslutning og erfaringere". In: *Kunnskap, opplevelse, tilhørighet. Evaluering av forsøksfasen i Den norske kirkes trosopplæringsreform*. Bergen: Fagbokforlaget

Hauglin, Otto; Lorentzen, Håkon; Mogstad, Sverre Dag: "En ny fase i dåpsopplærings historie". In: *Kunnskap, opplevelse, tilhørighet. Evaluering av forsøksfasen i Den norske kirkes trosopplæringsreform*. Bergen: Fagbokforlaget

Langvasbråten, Trude: «A Scandinavian Model? Gender Equality Discourses on Multiculturalism». *Social Politics. International Studies in Gender, State & Society*, 15(1):32-52.

Lorentzen, Håkon & Sverre Dag Mogstad: "En modell for å analysere endringer". In: *Kunnskap, opplevelse, tilhørighet. Evaluering av forsøksfasen i Den norske kirkes trosopplæringsreform*. Bergen: Fagbokforlaget

Lindblad, Sven: «Farende fant i Follo: Tater, loffere og kremmere i våre bygder». *Follominne*, (46): 130-153.

Lindblad, Sven: «'Nu sidste Reis mig forestaaer': 'Wergelands Minde' i Ski - et hus med historisk sus». *Follominne*, (46): 63-78.

Midtbøen, Arnfinn Haagensen & Jon Rogstad: «Diskrimineringens art, omfang og årsaker». *Søkelys på arbeidslivet*, 25(3):417-429.

Orupabo, Julia: «I andre land betyr ikke hudfarge noe, har du papirer, så får du en jobb». *Søkelys på arbeidslivet* 25(1):51-62.

Rogstad, Jon: «Musikk fra et ungdomsrom. Ord til slutt om kjønn, makt og musikk». In: Anne Lorentzen og Astrid Kvalbein (red.) *Musikk og kjønn - i utakt?* Bergen: Fagbokforlaget.

Saglie, Jo: «Norske partilandsmøter: Mellom politikk og kultur». In: Karina Kosiara-Pedersen og Peter Kurriid-Klitgaard (red.): *Partier og partisystemer i forandring. Festskrift til Lars Bille*. Odense: Syddansk Universitetsforlag.

Saglie, Jo: «Valgordninger og kirkelig demokrati. En prinsipiell drøfting av utfordringer for det kirkelige demokratiet». In: Hans Stifoss-Hansen og Inger Furseth (red.), *Mellom prinsipper og pragmatisme - analyser av høringen om staten og Den norske kirke*. KIFO-perspektiv (18). Trondheim: Tapir Akademi Forlag.:15-30.

Sivesind, Karl Henrik: «Nonprofit organisasjoner på velferdsfeltet i Norden». In: Bjarne Ibsen, Thomas P. Boje & Torben Fridberg (red.) *Det frivillige Danmark*. Odense: Syddansk forlag: 161-178.

Solheim, Jorun: «Prolog: Modernitetens tragiske splittelse». *Fett* (1/2008):20-25.

Storvik, Aagoth Elise & Pål Schøne: «In search of the glass ceiling: gender and recruitment to management in Norway's state bureaucracy». *The British Journal of Sociology*, 59 (4):729-755.

Aarset, Monica Five: «'Man skal ikke fortelle alt, da'. Unge med innvandrerbakgrunn og fremtidige ekteskap». In: *IMDI-rapport 6-2008 Integreeringskart 2008, Tvangsekteskap - en kunnskapsstatus:129-137.*

ISF REPORTS

Bredal, Anja & Julia Orupabo: *Et trygt sted å bo. Og noe mer. Evaluering av botilbudet til unge som bryter med familien på grunn av tvangsekteskap*. ISF report 2008:007.

Brekke, Jan-Paul: *Fra tilbakevending til retur. Evaluering av Flyktninghjelpens informasjonsprosjekt INCOR*. ISF report 2008:012.

Dugstad, Line & Håkon Lorentzen: *Alle til lags. Frivillighetssentralene i nærmiljøet*. ISF report 2008:011.

Enjolras, Bernard: *Nettverkssamfunn og frivillig organisering. En kunnskapsstatus*. ISF report 2008:010.

Ferrari de Carli, Eli: *Religion, juss og rettigheter: Om skilsmisse, polygami og shari'a-råd*. ISF report 2008:005.

Lidén, Hilde & Tonje Bentzen: *Kjønnslemlestelse i Norge*. ISF report 2008:008.

Lidén, Hilde, Hilde Rusten & Monica Five Aarset: *Å høre barn i utlendingssaker*. ISF report 2008:002.

Lorentzen, Håkon: *Visjoner og virkelighet. Røde Kors: Samfunnsanalyse 2007*. ISF report 2008:006.

Orupabo, Julia: *«På TV sa de at de trengte ingeniører...»*. *Etniske minoriteter: klasseidentifikasjon og arbeidsspissjon*. ISF report 2008:009.

Seippel, Ørnulf: *Spilleroverganger og klubbutfordringer i Oslo-fotballen*. ISF report 2008:004.

Sivesind, Karl Henrik: *Halveis til Soria Moria. Ikke-kommersielle velferdstjenester, politikkenes blinde flekk?* ISF report 2008:003.

PAPERS

Allern, Elin Haugsgjerd & Nicholas Aylott: «Overcoming the Fear of Commitment: Pre-electoral Coalitions in Norway and Sweden». Paper presented at Nasjonal fagkonferanse i statsvitenskap, Tromsø, April 28–30 2008.

Allern, Elin Haugsgjerd, Ann-Helén Bay & Jo Saglie: «Welfare Policy Consensus and Elite Cooperation? Party Manifestos and Policy-Making in Norway». Paper presented at *Nasjonal fagkonferanse i statsvitenskap*, Tromsø, April 28–30 2008.

Bay, Ann-Helén: «Does immigration undermine welfare state support?» Paper presented at *XV NOPSA konferanse, arbeidsgruppe Mangfold, inkludering og medborgerskap*. Tromsø, August 6-9 2008.

Bolvig, Iben, Inés Hardoy, Merja Kauhanen, Reija Lilja, Michael Rosholm & Marianne Røed: «The Long-Term Impact of Tightening Rules for Unemployment Insurance Entitlement: Employment and Unemployment Rates, Participation Rates, and Earnings» Paper presented at the *EALE conference* in Amsterdam, September 2008.

Borchgrevink, Tordis: «Spenningsforholdet mellom sekularitet og religionsfrihet». Paper presented at the NFR seminar *Forskningsutfordringer i et 7-års perspektiv*. Voksenåsen, May 15 2008.

Borchgrevink, Tordis: «The Trouble with Secularism: Reflections upon a contemporary muddle - conceptual, normative and legal». Paper presented at *New Perspectives on Secularisms and the Secular*. Department of Social Anthropology, University of Oslo, October 10 2008.

Borchgrevink, Tordis: «From Hijab to Habermas». Paper presented at the *completion conference for the NFRproject «Demokrati og kvinners menneskerettigheter» (DEMROK)*. Institute for social research, November 20 2008

Bredal, Anja: «Vold mot minoritetskvinner - mellom 'det spesielle' og 'det generelle'». Key-note speech at *Indvandrerdage* hosted by Akademiet for migrasjonsstudier i Danmark (AMID), November 13 2008.

Brekke, Jan-Paul: «Making the unreturnable return. The role of the welfare state in promoting return for rejected asylum seekers in Norway». Paper presented at the *IAFSM Conference* in Kairo, Egypt, January 2008.

Dale-Olsen, Harald: «Executive pay determination and firm performance». Paper presented at *EALE2008* in Amsterdam, September 19-20 2008.

Dale-Olsen, Harald: «Firm performance, executive pay and tax reforms». Paper presented at *EEA/ESEM2008* in Milan, August 27-30 2008.

Dale-Olsen, Harald: «Absenteeism, efficiency wages and tax reforms». Paper presented at *National Institute of Economic and Social Research (NIESR)* in London, December 9 2008.

Engelstad, Fredrik: «Børs og katedral. En parole for ikke-troende anti-kapitalister?» Paper presented at the conference *Hybride organisasjoner*. Institute for sociology and human geography, University of Oslo, December 10-12 2008.

Engelstad, Fredrik: «Self reflection through camera. An essay on culture industry, alienation and power». Paper presented at the *ESA midterm conference - Arts, Culture and Public Sphere*. Venice, November 4-8 2008

Enjolras, Bernard & Ragnhild Holmen Waldahl (2008): «Democratic governance and oligarchy in voluntary organizations: the case of the Norwegian Olympic Committee and Confederation of Sports». Paper presented at the *8th International conference of ISTR*, Barcelona, July 9-12 2008.

Gulbrandsen, Trygve: «Næringslivets velferdspolitiske rolle». Paper presented at the *anniversary seminar for Ann-Helén Bay: Velferd uten stat*. Institute for social research, June 3 2008

Gulbrandsen, Trygve & Even Lange: «The Survival of Family Dynasties in Shipping». Paper presented at the *Twelfth annual conference of the European Business History Association*, Bergen, Norway, August 21-23 2008

Hagelund, Anniken & Grete Brochmann: «From rights to duties? Welfare and citizenship for immigrants and refugees in Scandinavia». Paper presented at the *International Studies Association's annual conference*, San Francisco, March 28 2008.

Hagelund, Anniken & Hanne Kavli: «If work is out of sight. Activation and citizenship for new refugees». Paper presented at the conference *Activation policies on the fringes of society: a challenge for European welfare states*, Institut für Arbeitsmarkt- und Berufsforschung, Nürnberg, May 15-16 2008.

Hagelund, Anniken & Hanne Kavli: «If work is out of sight. Experiences with introductory programmes for newly arrived refugees». Paper presented at *Nordisk nettverk arbeidsmarkedintegrering av innvandrere*, Fafo, Oslo, November 28 2008.

Jensen, Ragnhild Steen: «Place and Gender: Women's paths into wage into wagework». Paper presented at the *IGU conference Theoretical approaches in labour geographies*, Oslo, May 14-15 2008

Karlsen, Rune: «Still Broadcasting the Campaign. On Fragmenting Political Communication with Evidence from Norwegian Electoral Politics». Paper presented at the *XV NOPSA Conference*, Tromsø, Norway, August 6-10 2008.

Karlsen, Rune: «Electoral Information and the Internet. Voter Use in the 2005 Norwegian Election Campaign». Paper presented at the *Annual Norwegian Conference in Political Science*, Tromsø, April 2008.

Krogstad, Anne og Aagoth Storvik: «Charismatic Political Leadership in Norway and France». Paper presented at the «*First ISA Forum of Sociology*», Barcelona, September 5-8 2008.

Krogstad, Anne & Aagoth Storvik: «Political Leadership and Gender in France and Norway». Paper presented at the conference «*Elite Symbolic Superiority: Multi-Disciplinary perspectives*», Maison Francaise d'Oxford, Oxford, October 16 2008.

Langvasbråten, Trude: «For the sake of justice? Comparing expanding anti-discrimination policies and 'multidimensional equality' in Sweden, Denmark and Norway». Paper presented at the Phd course *The role of ideas, discourses and frames in welfare policies*, at Aalborg University, Research School Welfare State and Diversity, Roskilde University. October 1-3 2008.

Langvasbråten, Trude, Hege Skjeie & Mari Teigen: «Likestilling, mangfoldspolitikk og religiøs pluralisme. En lenkesamling til regjerings- og stortingsdokumenter 1997-2007».

Lidén, Hilde: «Barns uttalerett på utlendingsfeltet». Paper presented at *Nordisk seminar: Barns rett til medbestemmelse og selvbestemmelse*, Oslo, May 22-23 2008.

Lidén, Hilde: «Children, immigration policy and citizenship - Norway as case» Paper presented at the work group *Children and migration in Europe: Between new citizenships and transnational families*, 10th EASA conference, Ljubljana, August 26-30 2008.

Lidén, Hilde: «Citizenship, migration and children left behind». Paper presented at the work group: *Child Migrants' Rights as Citizens: Rights Discourses, Claims and Realizations*. Institute for social research, September 12 2008.

Lidén, Hilde: «Convention on the rights of the Child – a relevant and effective tool for the protection of separated children». *Speech at international seminar hosted by Save the children/SCEP network*, Oslo, October 30 2008

Lidén, Hilde: «Kjønnslemlestelse i Norge». Paper presented at *conference on gender mutilation for health workers hosted by Fylkeslegen i Oslo og Akershus*. Oslo, November 21 2008.

Monkerud, Lars Chr., Jo Saglie & Signy Irene Vabo: «Representantroller i et reformert lokaldemokrati». Paper presented at the *Nordic Political Science Association (NOPSA) XVI Conference*, August 6-9 2008.

Saglie, Jo: «Hvorfor delta i lokalpolitikken – og hvorfor ikke?» Paper presented at the *17. Nordiske kommunalfor-skerkonferansen*, Kristianand, November 28-30 2008.

Seland, Idunn: «Politikkutforming for nasjonal enhet og etnisk mangfold: den norske opplæringsloven som case». Paper presented at the *Nordic Political Science Association (NOPSA) XVI Conference*, Tromsø, August 6-9 2008

Sivesind, Karl Henrik: «Velferd uten stat: Ikke-kommersielle velferdstjenesters omfang og rolle». Paper presented at *anniversary seminar for Ann-Helén Bay: Velferd uten stat*. Institute for social research, June 3 2008.

Teigen, Mari: «Kvotering til ASA-styrene – mellom eierskapsinteresser og likestillingsmålsettinger». Paper presented at *NIKK – Nordisk institutt for kvinne- og kjønns-forsknings release of NIKK magasin*, June 17 2008.

Teigen, Mari: «Kvoteringskontrovers, krisepolitikk og kaffelattemammaer» Paper presented at *Kjønnsforskningmesse 2008, Sluttarrangement for forskningsprogrammet Kjønnsforskning: Kunnskap, grenser, endring*. Norges Forskningsråd.

Teigen, Mari: «Norwegian quota policies». Paper presented at *Nineteenth Meeting of the Helsinki Group on Women and Science*, Brussels, November 4-5 2008.

Teigen, Mari: «Women in decision-making: The Norwegian Paradox» Paper presented at *EUROCADRES network conference «Women in decision making – from Europe to the Company»*, Brussels, January 21-23 2008.

Teigen, Mari & Trude Langvasbråten: «Contested Diversity: Public debate on female genital mutilation». Paper presented at the conference *Power and Resistance. What is the impact of gender concerning relations between minorities and majorities?* International conference organized by the FEMM-network, University of Oslo, January 10-11 2008

Aarset, Monica Five & Christine M. Jacobsen: «Kjønn som over- og underbelyst tema i forskningen på islam i Norge». Paper presented at the conference *Islam i Norge: status for forskningen, blinde flekker?* Culcom/Faculty of Theology, University of Oslo, May 26-27 2008.

Aarset, Monica Five: «The question of marriage - autonomy and value conflicts among minority youth in Oslo». Paper presented at *NYRIS10 Nordic Youth Research Conference Bonds and Communities. Young People and their Social Ties*. Lillehammer, Norway, June 13-15 2008, and at Generation in Flux conference, Helsinki, October 23-24 2008.

Aardal, Bernt & Rune Karlson: «Towards an Integrated and Dynamic Model of Voting». Paper presented at the *XV Nordic Political Science Association (NOPSA) conference* in Tromsø, August 6-10 2008.

Aardal, Bernt: «The left-right Scale. What does it measure and who cares?». Paper presented at the *16. national political science conference*, Tromsø, April 27-30 2008.

Aarset, Monica Five: «Unge med innvandrerbakgrunn og fremtidige ekteskap». Paper presented at *Norsk Antropologisk Forenings Årkonferanse 2008 Forestilte fellesskap*, University of Oslo, May 23 - 24 2008.

EXTERNAL REPORTS

Barth, Erling, Alexander W. Cappelen & Tone Ognedal: Norms and Tax Evasion. Report 4/2008 Frischsenteret: Universitetet i Oslo. (AR 2008:007)

Barth, Erling & Kalle Moene: The Equality Multiplier. ESOP Working Paper, University of Oslo. (AR 2008:006)

Barth, Erling, Torbjørn Hægeland & Oddbjørn Raam: Performance Pay and Within-Firm Wage Inequality. Discussion Paper No. 535 Oslo: Statistisk sentralbyrå. (AR 2008:004)

Bergh, Johannes: Gender Attitudes, New Politics, and Modernization. Four Studies of Continuity and Change in Modern Democracies. Dr. polit.-avhandling Universitetet i Oslo: Institutt for statsvitenskap. (AR 2008:002)

Huber, Manfred, Mathias Maucher, Barbara Sak & Bernard Enjolras: Study on Social and Health Services of General Interest in the European Union. Final Synthesis Report. European Commission, DG Employment, Social Affairs og Equal Opportunity. (AR 2008:005)

Likelønnskommisjonen: Kjønn og lønn. Fakta, analyser og virkemidler for likelønn. NOU 2008: 6, Oslo: Barne- og likestillingsdepartementet. (AR 2008:003)

McClimans, Else Leona & Trude Langvasbråten: Likestillingslovens § 21. En evaluering. Rapport Oslo: Avdeling for kvinnerett, Institutt for offentlig rett/Institutt for samfunnsforskning. (AR 2008:010)

Pedersen, Peder J., Marianne Røed & Eskild Wadensjø: The Common Nordic Labour Market at 50. TemaNord 2008:506 Nordisk Ministerråd. (AR 2008:008)

Ulseth, Anne-Lene Bakken: Mellom tradisjon og nydannelser. Analyser av fysisk aktivitet blant voksne i Norge. Dr. polit.-avhandling Universitetet i Oslo: Institutt for sosiologi og samfunnsgeografi. (AR 2008:001)

Aarset, Monica Five, Hilde Lidén og Idunn Seland (2008), Ungdom med innvandrerbakgrunn. Verdier, normdannelse og livsvalg. IMDI-rapport 10-2008. Oslo: Integrerings- og mangfoldsdirektoratet.

FEATURE ARTICLES

Bergh, Johannes og Tor Bjørklund: «Nominasjonsmøtene avgjør». *Dagsavisen*, 9. desember 2008. (K 2008:015)

Brekke, Jan-Paul og Tordis Borchgrevink: «Varför misslyckas integrationspolitiken?» *Invandrare och minoriteter*, 4/2008. (K 2008:012)

Brekke, Jan-Paul: «Det gjelder å holde ut». *Dagbladet*, 7. januar 2008. (K 2008:001)

Ferrari de Carli, Eli: «Muslimske kvinner og skilsmisse». *www.forskning.no*, 27. august 2008. (K 2008:008)

Ferrari de Carli, Eli: «Bigami må forhindres». *Aftenposten* August 20 2008.

Hagelund, Anniken (2008), Bokanmeldelse av Bjørn Hvinden og Håkan Johansson (red.) «Citizenship in the Nordic Welfare States. Dynamics of choice, duties and participation in a changing Europe», *Tidsskrift for samfunnsforskning*, 49 (1): 129-131.

Jensen, Ragnhild Steen: «Moderat kvotering – virker det?». *www.forskning.no*, 20. desember 2008. (K 2008:017)

Jensen, Ragnhild Steen: «Men hva gir lønnsomhet?». *Aftenposten* 5. september 2008 (K 2008:010)

Langvasbråten, Trude: «Fritt vilt». *Dagbladet*, 22. desember 2008 (K 2008:016)

Langvasbråten, Trude: «Kritiske blikk på majoritetens makt». *Bulletine*, 1-2008 (K 2008:002)

Lidén, Hilde og Hilde Rusten: «Barn forblir usynlige». *Aftenposten* 16. juli 2008 (K 2008:006)

Lidén, Hilde & Tonje Bentzen: «Motstand virker». *Dagbladet*, 16. juni 2008 (K 2008:004)

Lidén, Hilde: Anmeldelse av Mary Ann Hedlund (red): *Barnerett - i et internasjonalt perspektiv*. *Tidsskrift for velferdsforskning* nr 4:284-286

Midtbøen, Arnfinn Haagensen: «Dobbelt statsborgerskap og nasjonalt samhold». *www.minerva.as*. (K 2008:013)

Rogstad, Jon: «Hvilket mangfold?». *Dagbladet* 12. august 2008 (K 2008:007)

Rogstad, Jon: «Når media sier hopp...» Sosiolognytt nr. 2-2008 (K 2008:005)

Saglie, Jo: «Anmeldelse av Hans Krause Hansen og Jens Hoff (red, 2006), Digital Governance: Networked Societies. Creating Authority, Community and Identity in a Globalized World». Norsk statsvitenskapelig tidsskrift, 24 (1-2):174-177. (T 2008:015)

Schøne, Pål: «Mer fokus på viktige ulikheter». *www.forskning.no*, 8. september 2008 (K 2008:011)

Sivesind, Karl Henrik og Torbjørg Aalborg: «De frivilliges kår». *Dagbladet* 4. april 2008 (K 2008:003)

Solheim, Jorun: «Likhet og mangfold – ulike problemstillinger». *www.forskning.no*, 2. september 2008 (K 2008:009)

Teigen, Mari: «Kriselikestilling». *Dagbladet*, 1. november 2008 (K 2008:014)

Aardal, Bernt: Anmeldelse av Gunnar Grendstad, Per Selle, Øystein Bortne og Kristin Strømsnes, «Unique Environmentalism. A Comparative Perspective», *Tidsskrift for samfunnsforskning*, 49(1): 126-129.

Aardal, Bernt: Anmeldelse av Gunnar Grendstad, Per Selle, Øystein Bortne og Kristin Strømsnes, «Unique Environmentalism. A Comparative Perspective», *Tidsskrift for samfunnsforskning*, 49(1): 126-129. Schøne, Pål: "Brain drain eller Brain gain?" Editorial in *Søkelys på arbeidslivet*, 1/2007 (K 2007:019).

Waldahl, Ragnhild Holmen: "Presidentvalgkamp på norsk". Kronikk publisert på *www.samfunnsforskning.no*, 22.8.2007 (K 2007:009).

Aardal, Bernt: "Hvorfor kunne vi ikke stemme via Internett i høst?" *Webmagasin*, 2007/1 (K 2007:017).

Aarset, Monica Five: "Bare en minoritet". *Prosa*, 2007(06):35–37. (K 2007:022)

INSTITUTE ECONOMY

Institute activities are funded in the main by the Norwegian Research Council and the public sector. Commissions from the private sector at home and abroad represent a smaller fraction of our revenue (Figure 1).

Projects generate income through overhead. In 2008 income generated amounted to NOK 10.716.757, covering administrative, service-related and infrastructure costs.

In addition to project revenue, the Norwegian Research Council allocates an adjustable annual basic grant. In 2008, it was NOK 9.892.000 or 22 per cent of the Institute's overall revenue

of NOK 43.681.000.

The balance of the accounts is negative: NOK 1.970.244 before financial times. After financial items, the negative balance is reduced to NOK 796.282. The losses are not the result of ordinary operations, but derive from estimated growth in future pension liabilities to the Norwegian Public Service Pension Fund of NOK 3.249.683.

Figure 1. Main financial sources. Mill. NOK per year

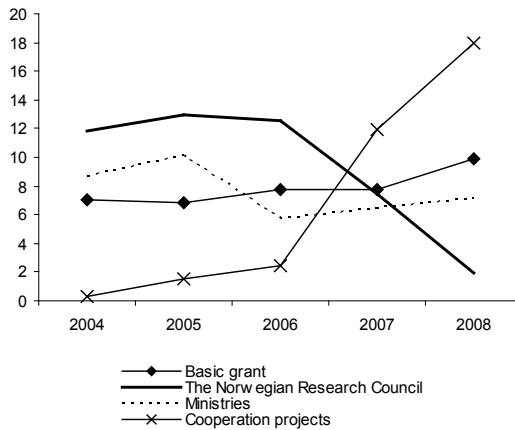
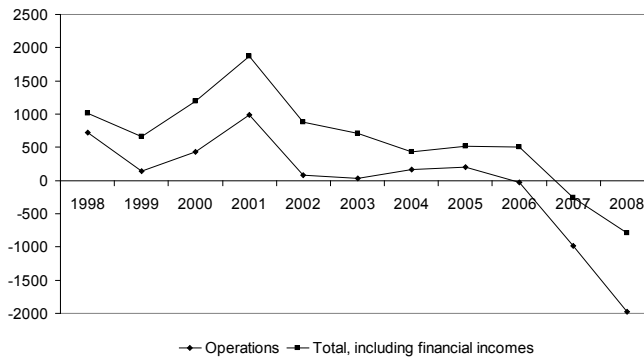


Figure 2. Annual results, 1998-2008. 1000 NOK.



ISF EVENTS 2008

ISF SEMINARS

Feminism and multiculturalism Multiculturalism without Culture: Rethinking the Significance of Groups
Institute for social research, February 26, 2008.

Feminism and multiculturalism: The Black Women's Movement in Germany – Divided Feminisms, Critical Difference Positionings and Interrogations of Gendered Whiteness.

Institute for social research, March 12, 2008

Kjønnskvoteering til ASA-selskapenes styrer. Demokrati og inklusjon (Affirmative Action targets the Boards of Limited Companies – A matter of democracy and inclusion)

Institute for social research, April 4, 2008

Den nye stortingsmeldingen om arbeidsinnvandring (The New White Paper on Labour Immigration)

Institute for social research, May 16, 2008

Å høre barn i utlendingssaker (Listening to the children in immigration disputes)

Institute for social research, May 28, 2008

Velferd uten stat: Jubileumsseminar for Ann-Helén Bay (Stateless Welfare – Seminar in Honour of Ann-Helén Bay)

Institute for social research, June 3, 2008

Kjønnslemlestelse i Norge (Prevalence and Practice of Female Genital Cutting in Norway)

Menneskerettighetshuset, Oslo, June 4, 2008

Offentlighet, medier og forskningsresultater (Freedom of Information, the Media and Research Results)

Institute for social research, June 9, 2008

Speakers: Fride Eeg-Henriksen, Bjørgulv Braanen, Francis Sejersted, Frode Jacobsen and Johnny Gimmestad

Afrikanere i Norge 1600-2000 – noen glimt av historiens mangfold (Africans in Norway 1600-2000 – Diversity Past and Present)

Institute for social research, August 21, 2008

Hvordan prioriteres forskningsproblemer? How Urgent are Problems Affecting Research? Determinants and Action)

Institute for social research, September 10, 2008

Speakers: Arvid Hallén, Gerd Vollset, Anja Bredal and Simen Ekern

Debattemøte: 18 år – hva nå? Barnemigranternes rettigheter etter fylte 18 (Debate: Eighteen Years Of Age – What Now? Child Migrants' Rights on Reaching

Majority

Institute for social research, September 12, 2008

Hva vet statsviterne om demokratiet?(What do Political Scientists Know about Democracy?)

Institute for social research, September 25, 2008

Speakers: Stein Ringen, Øyvind Østerud, Fredrik Engelstad and Bernt Aardal

Kick-off: Senter for forskning på sivilsamfunn og frivillig sektor (Kick-off: Centre for Civil Society and Tertiary Sector Studies)

Norges Røde Kors, Oslo, October 22, 2008

Feminisme og multikulturalisme: Hvordan gjøre analyser basert på et interseksjonelt perspektiv? (Feminism and Multiculturalism: How to do intersectional analysis)

University of Oslo, November 21, 2008.

Betaling av informanter (Remunerating Informants)

Institute for social research, November 28, 2008

Speakers: Anita Rathore, Guri Tyldum, Jon Rogstad, Ragnvald Kalleberg and Hege Torp

Feminisme og multikulturalisme: Harde kroppar. (Feminism and Multiculturalism: Hard Bodies)

Institute for social research, December 16, 2008.

CONFERENCES AND WORKSHOPS

Workshop: Labor Market Impacts of Immigration – Who Are the Winners and Who Stand to Lose?

Institute for social research. May 22-23, 2008

Workshop: Child Migrants' Rights as Citizens: Rights Discourses, Claims and Realizations

Institute for social research, September 11-12, 2008

Dagskonferanse: Tro, kultur og diskriminering

NOVA, Oslo, November 20, 2008

ARVID BRODERSEN MEMORIAL LECTURE

Starting in 1998 P.M. Røwde's Foundation has held an annual public lecture in memory of Arvid Brodersen.

This year's lecture was given by Eva Joly on "Ulovlige pengestrømmer som hinder for utvikling og statbygging (Illegal Flows of Money Hamper Growth and Statebuilding)", Institute for Social Research, October 22 Research, October 22



Anita Rathore from OMOD at the seminar *Remunerating Informants*, November 28, 2008



Bjørgulv Braanen, editor of *Klassekampen*. at the seminar *Freedom of Information, the Media and Research Results*, June 9, 2008



Professor Stein Ringen at the seminar *What do political scientists know about democracy?* September 25, 2008



Eva Joly gave this year's Arvid Brodersen memorial lecture: "Illegal Flows of Money Hamper Growth and State-building" October 22, 2008